

Kokanee escapement and fisheries update.

2010 BOBTWG presentation

Paul Askey
Stock assessment biologist - Penticton

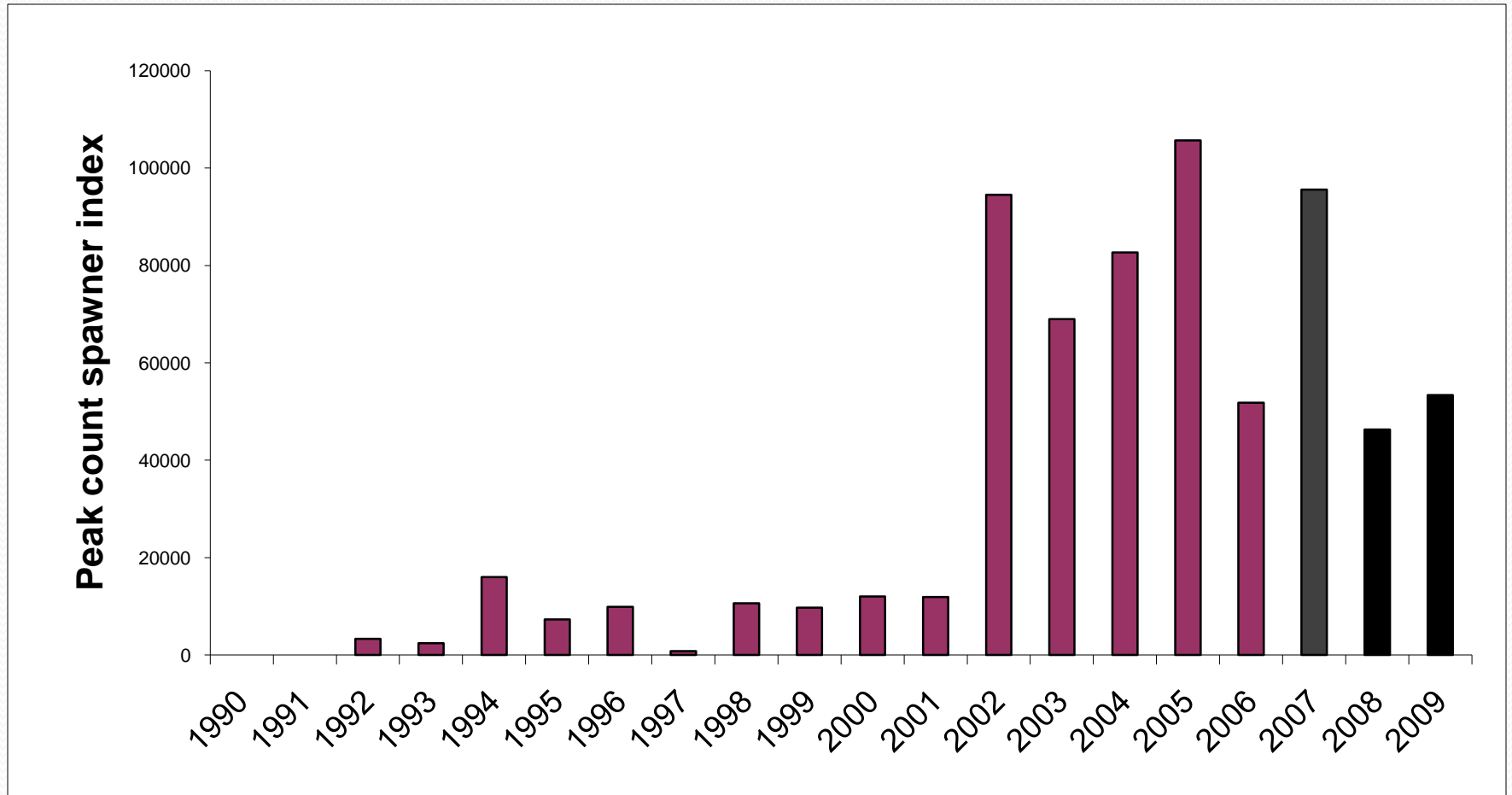
Kokanee escapement: South to North



Osoyoos

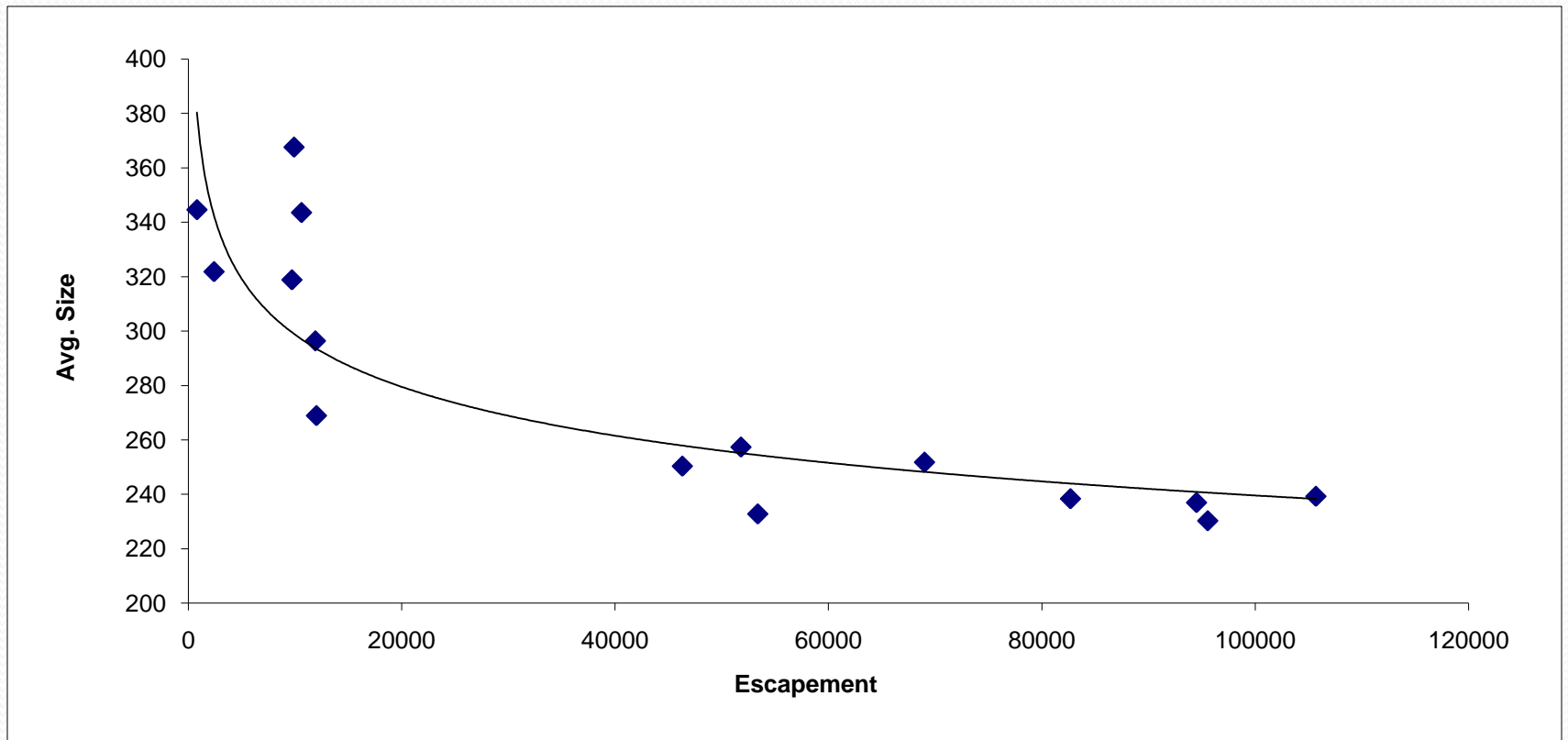
- Some small number of kokanee, no data.
- ?

Skaha



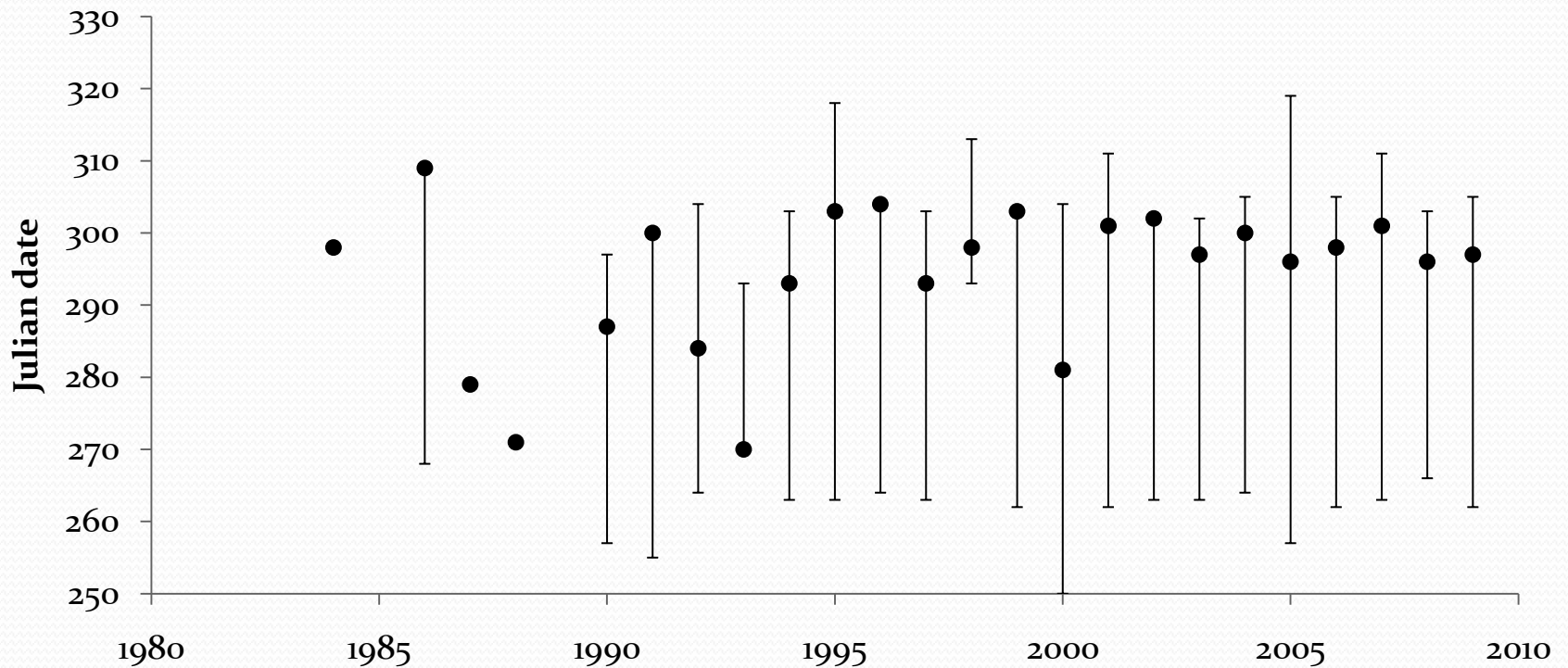
Stock re-construction

- Spawner size vs abundance



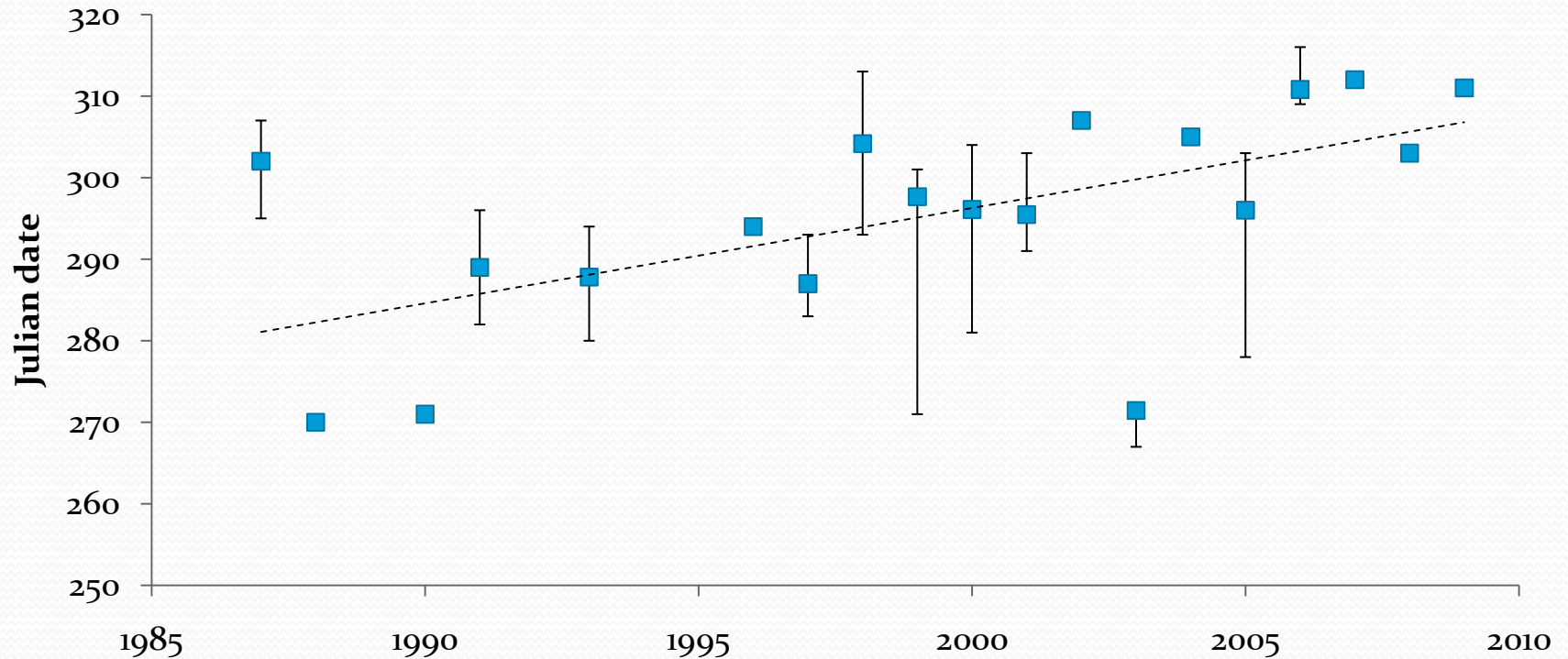
Stock re-construction

- Survey timing and peak count day



Stock re-construction

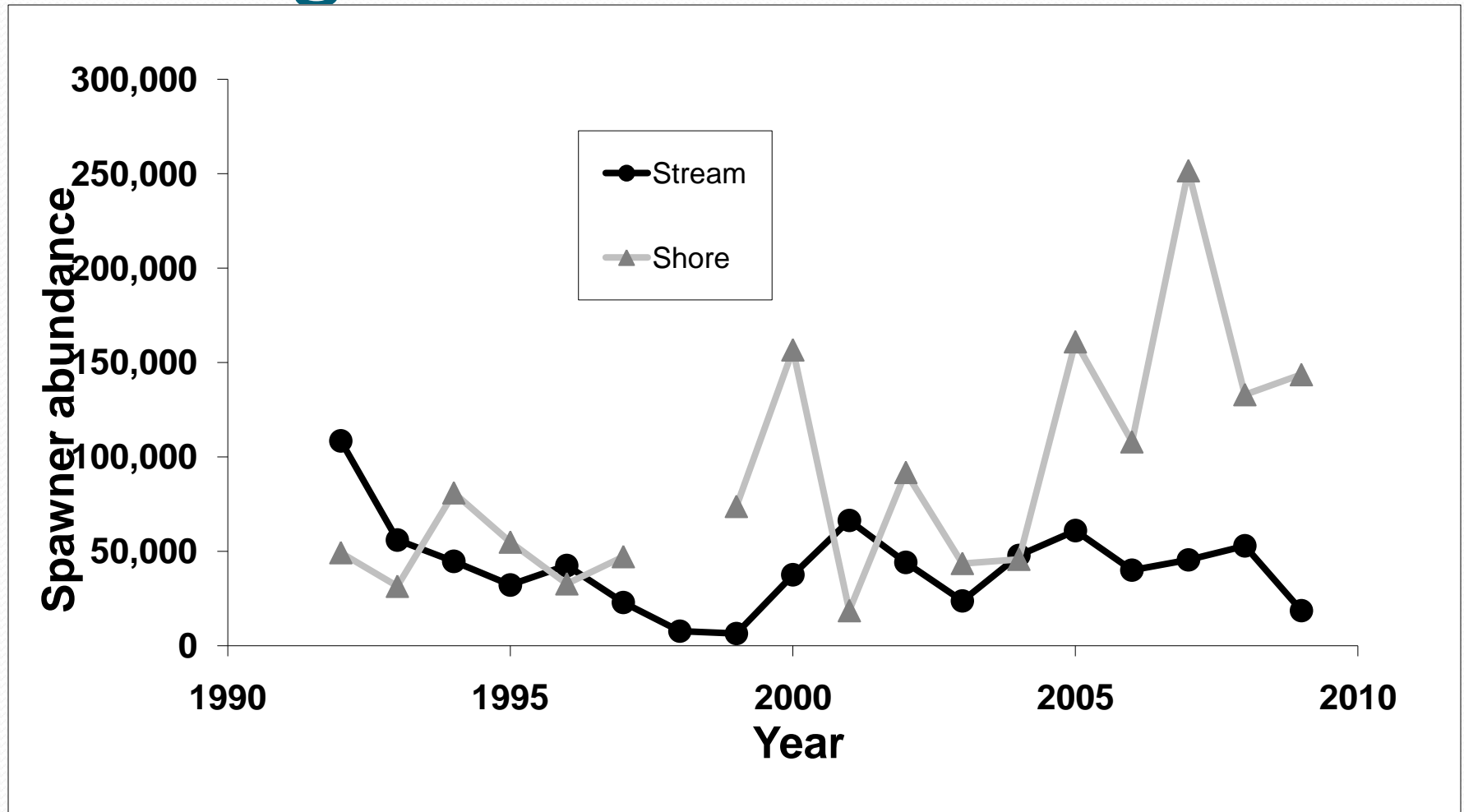
- Biosampling period



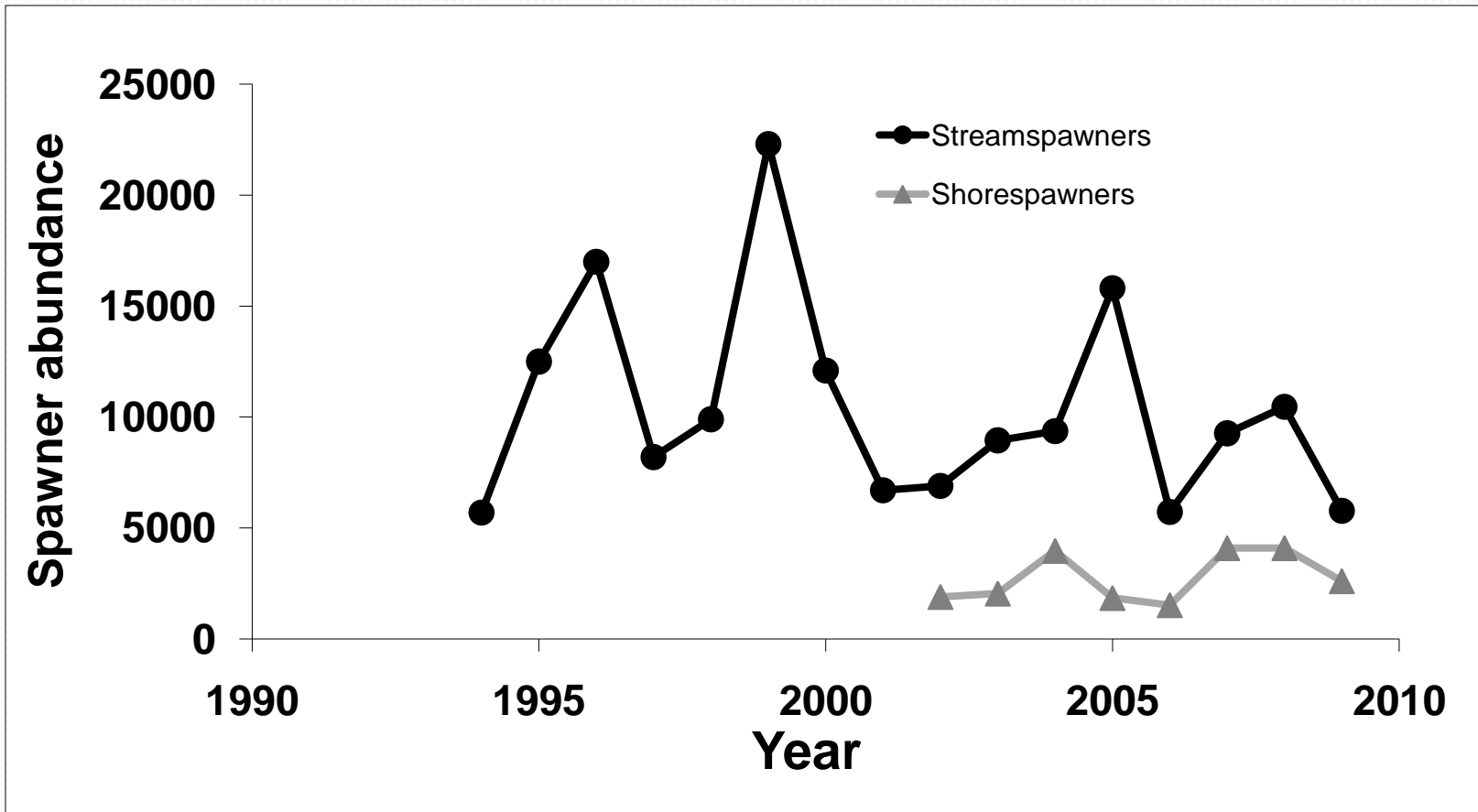
Skaha stock re-construction

- Some work could be done to re-evaluate the Skaha Lake time series, and see what information is salvageable.
- At this point it does not seem reasonable to use pre-2002 data as baseline.
- The onus is on the biologists wishing to use pre-2002 data to prove that this data is reliable.

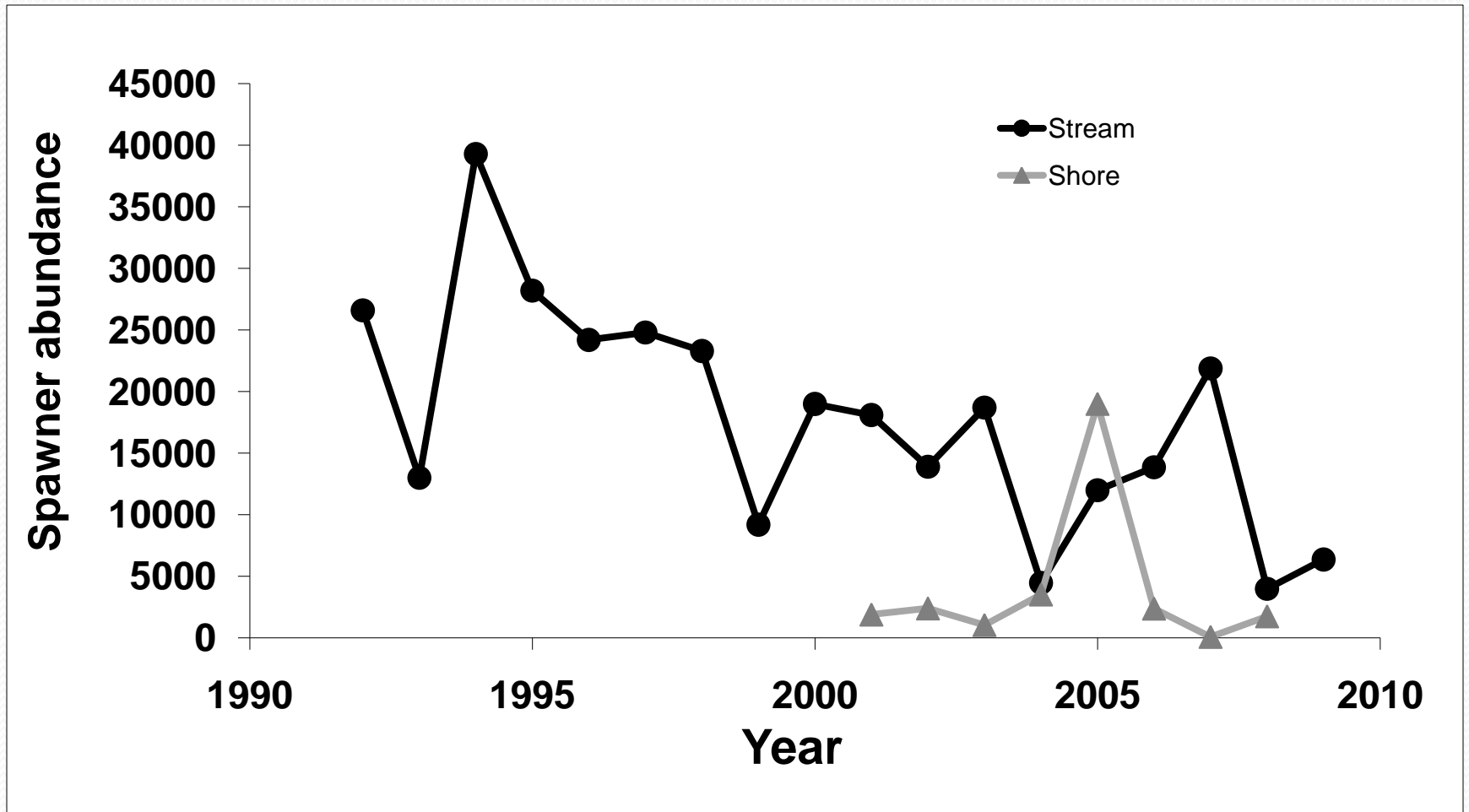
Okanagan



Wood



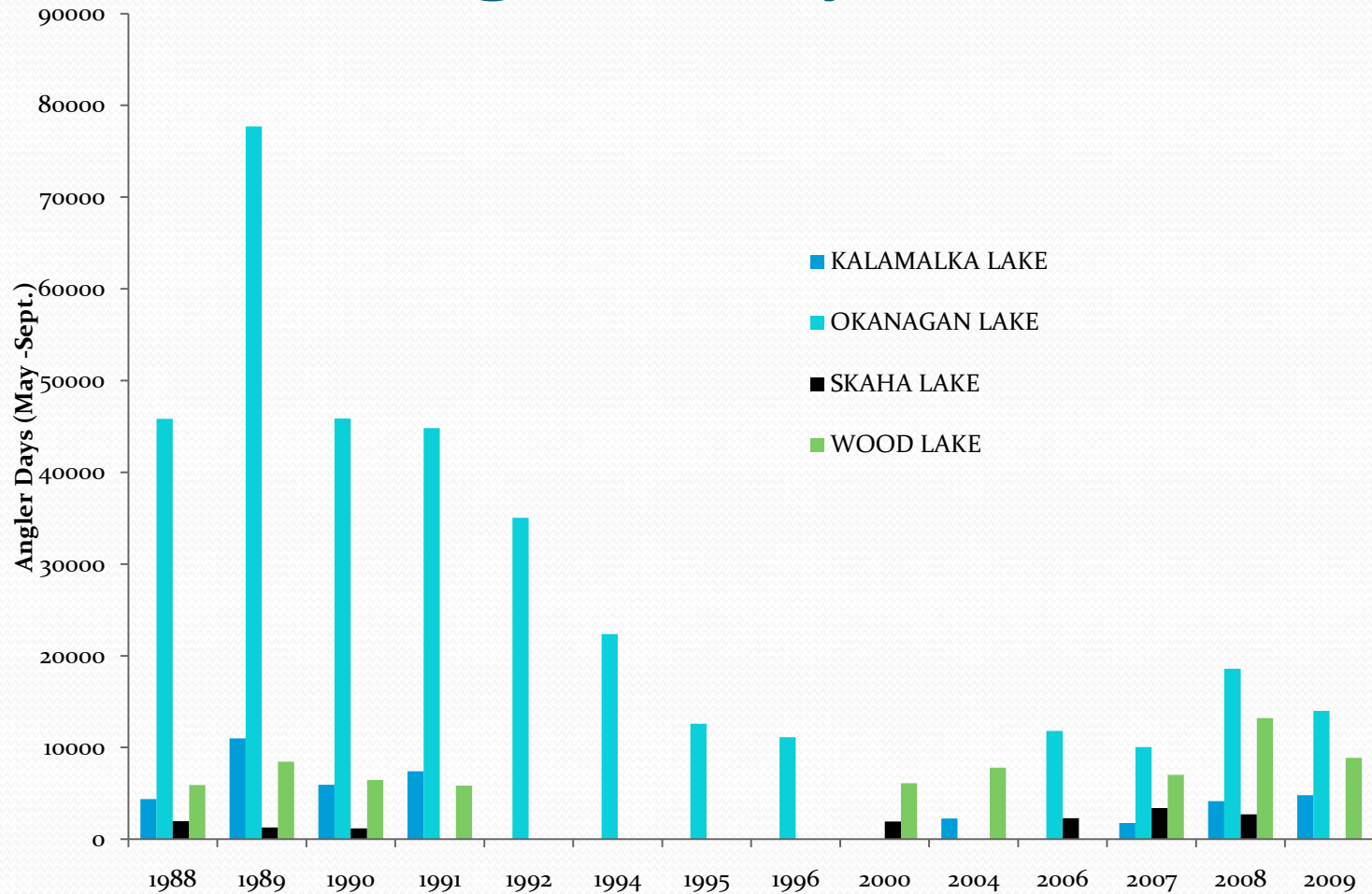
Kalamalka



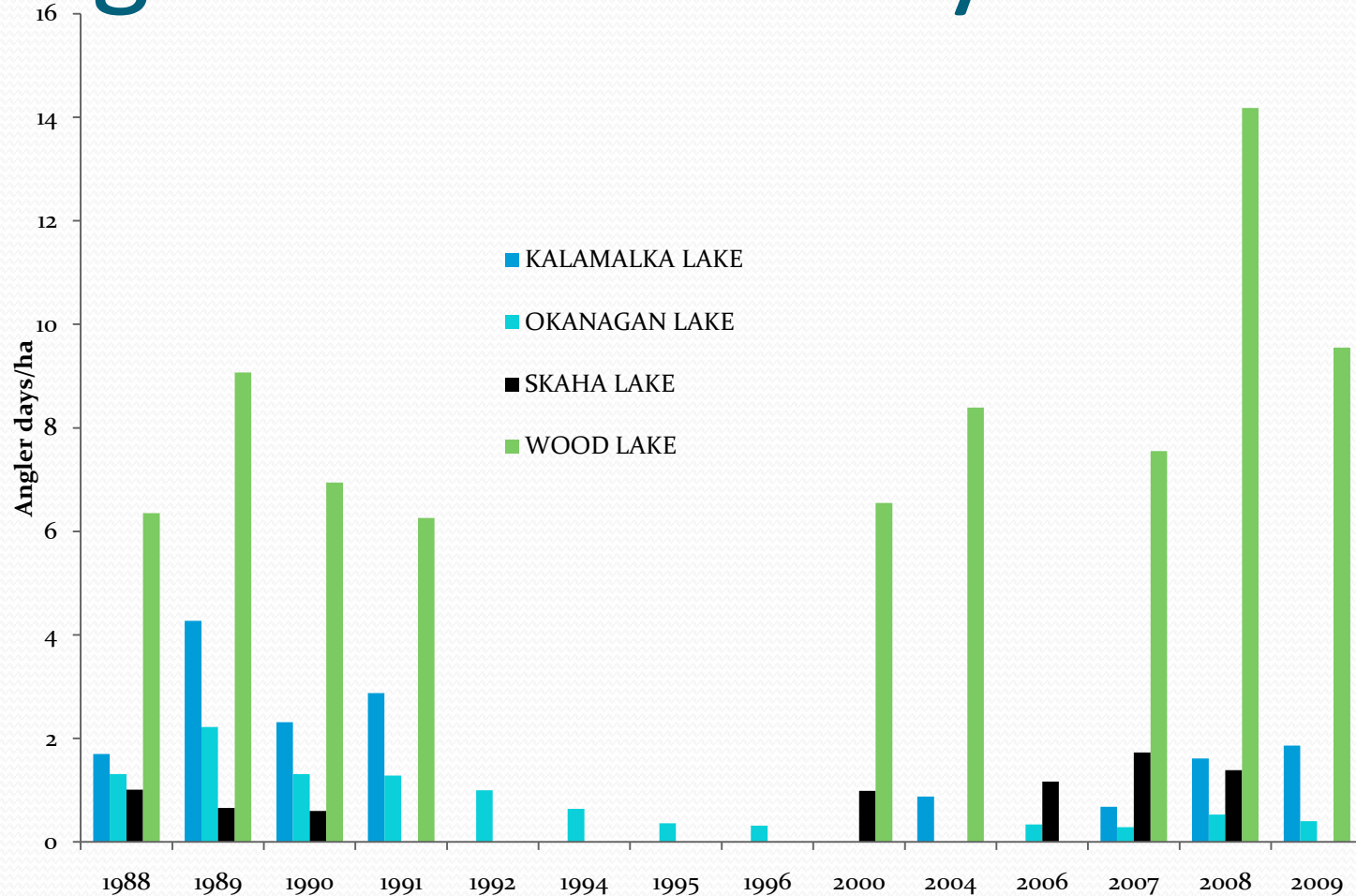
Kokanee fishery data



Summer angler days index



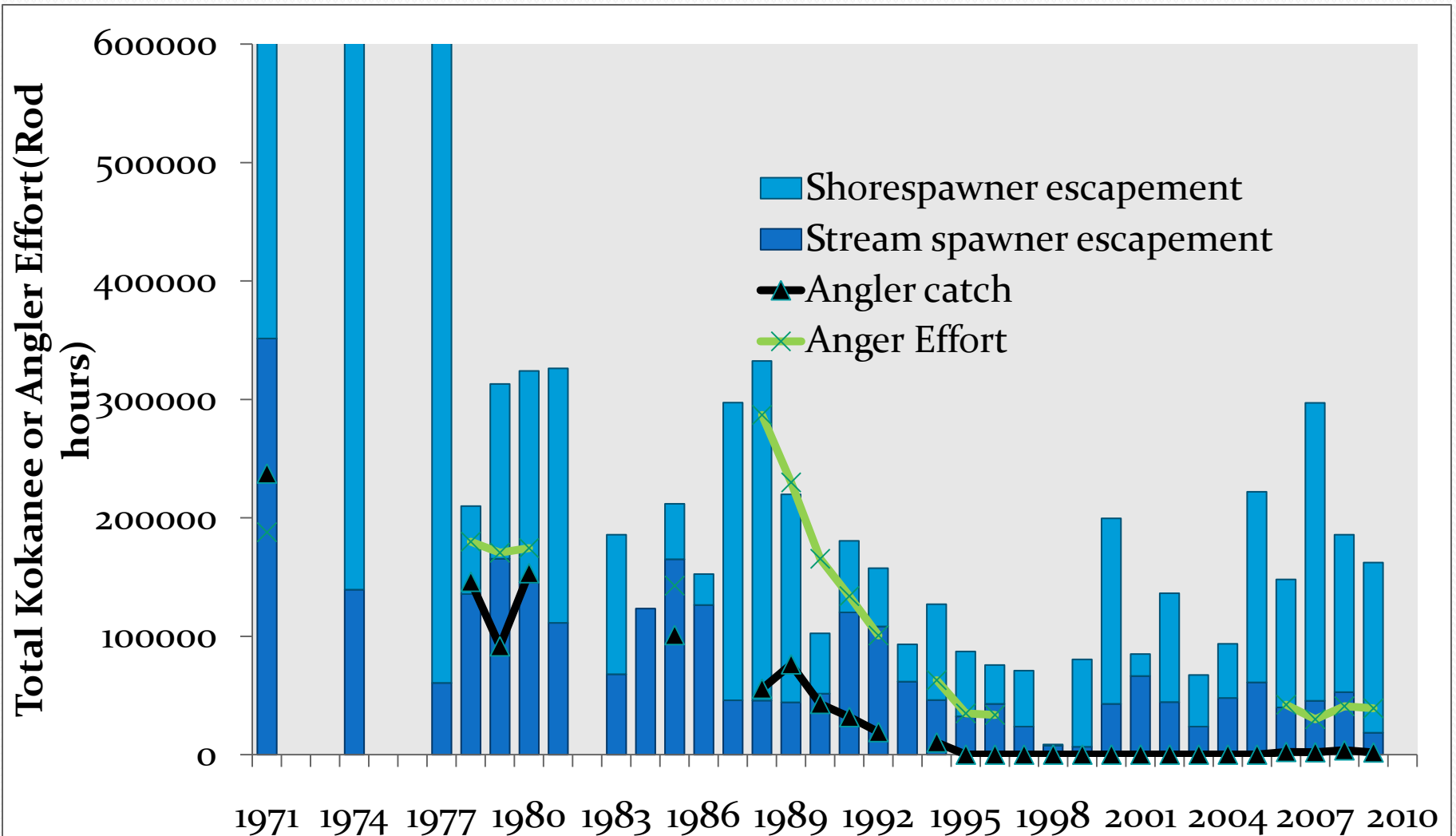
Angler effort density



Okanagan lake harvest

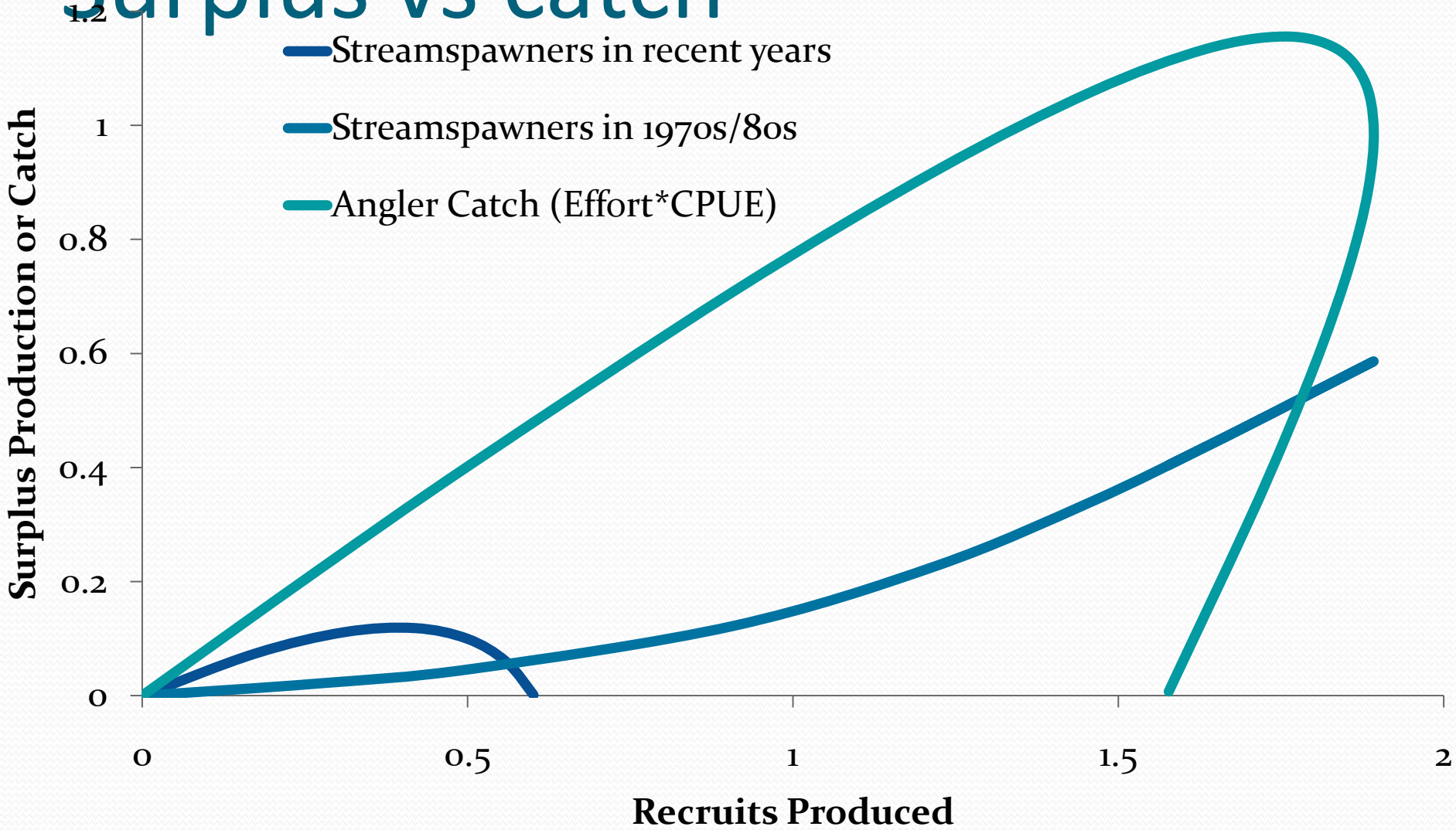


Okanagan stock reconstruction



Surplus vs catch

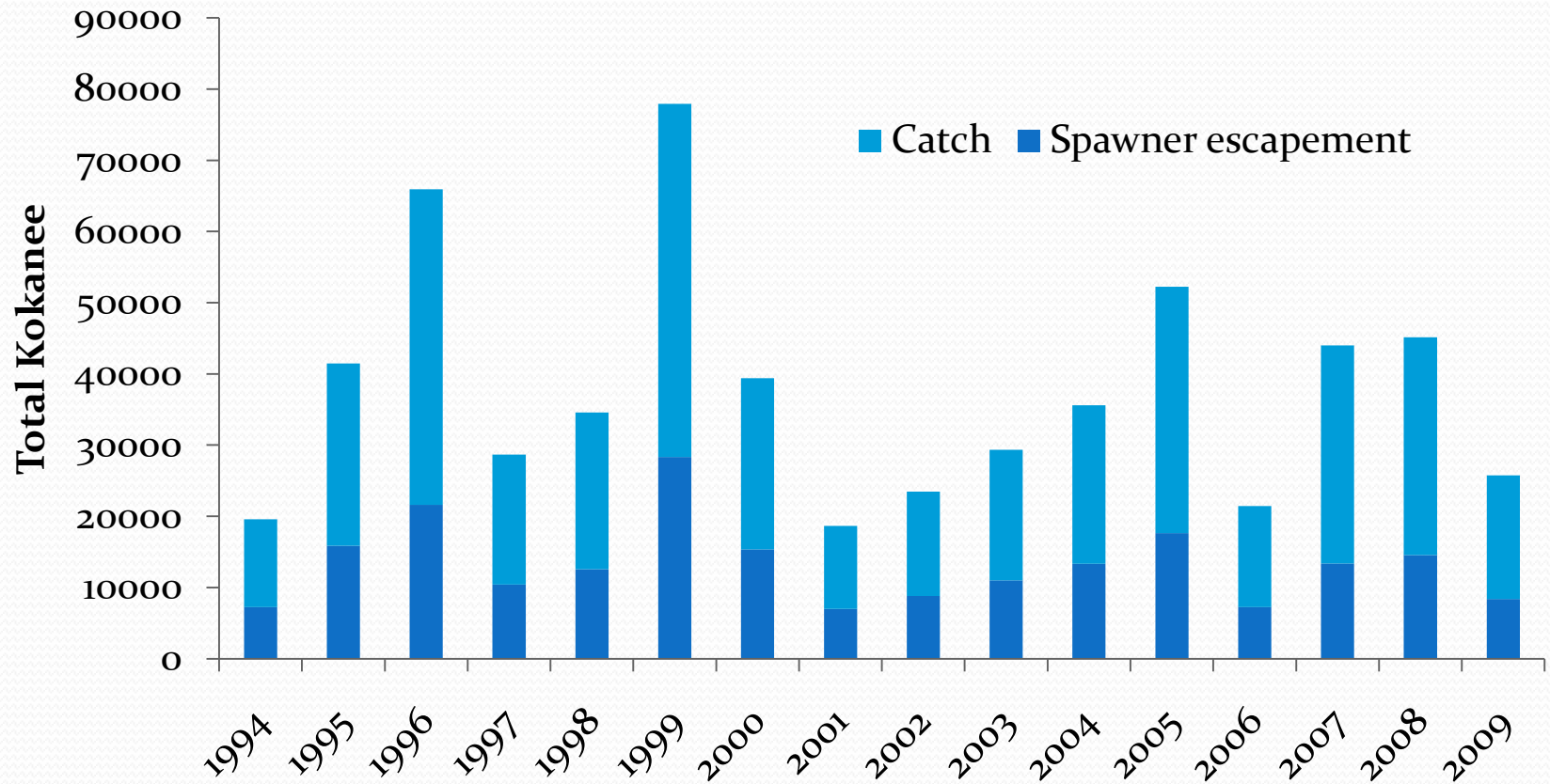
- Streamspawners in recent years
- Streamspawners in 1970s/80s
- Angler Catch (Effort*CPUE)



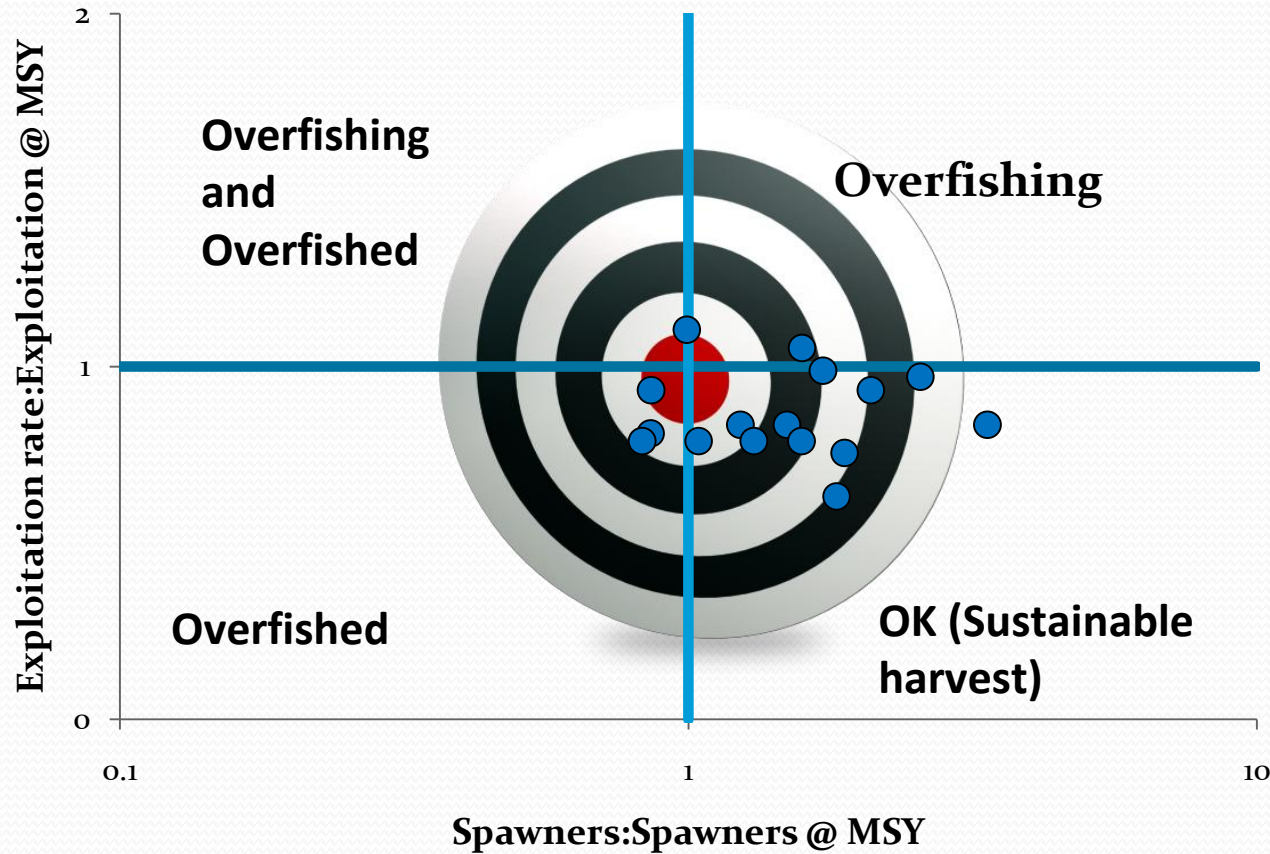
Wood Lake harvest



Wood stock re-construction



Best estimates of where we are with Wood Lake.





The end